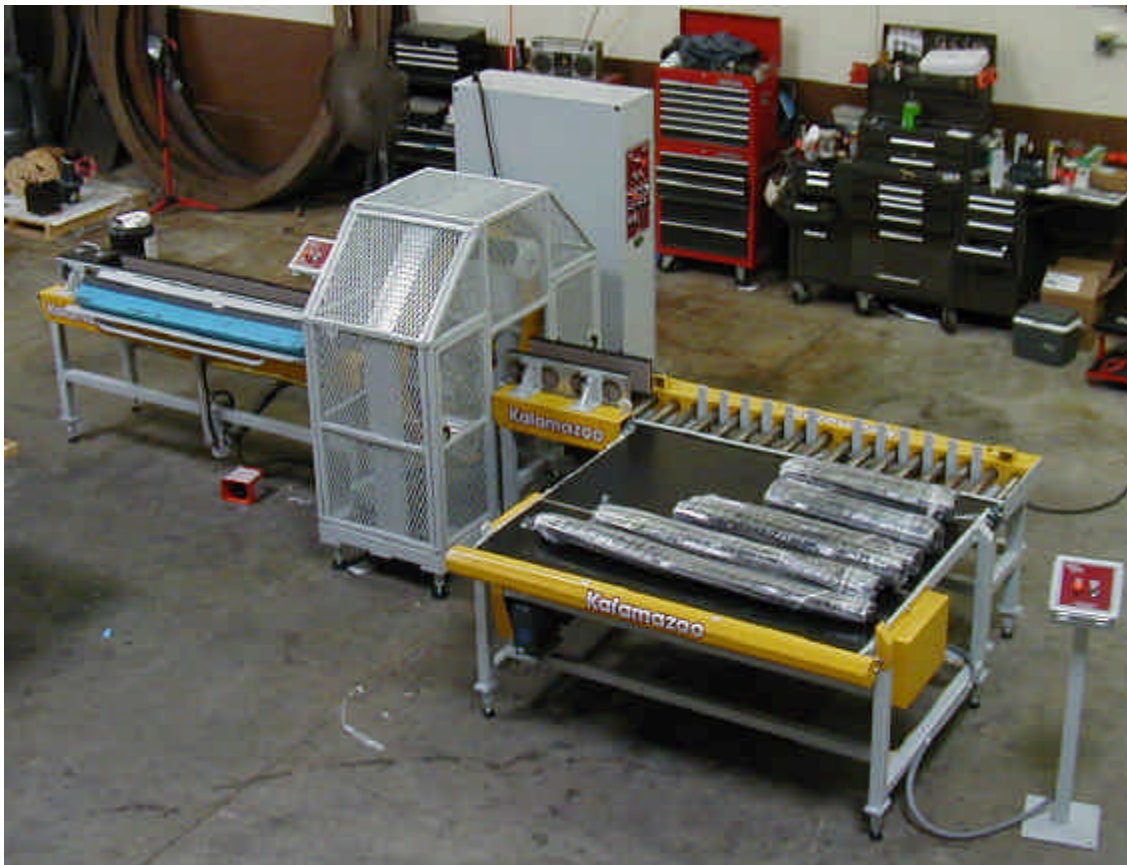


SERIES 816FA-D5
FULLY-AUTOMATIC WINDER STRETCH
WRAP SYSTEM with ROLLER CONVEYORS



OPERATORS
MANUAL

Table of

Contents

Warranty.....	3
Assembly.....	4
Loading Film.....	5
Controls.....	6
Operating Instructions.....	7
Maintenance.....	8
Adjustments	8
Trouble Shooting.....	9
AC Drive Programming.....	10
Parts Lists	11-31
Wiring Diagram	32-36
PLC Programming.....	37-

Introduction

Congratulations! Your purchase of a Kalamazoo Series 800 Horizontal Winder Stretch Wrap System will provide you with years of efficient stretch wrapping service. Your investment will ensure that your products will arrive cleaner, with less damage and pilferage at their destination at a lower cost to you.

Kalamazoo Packaging Systems products carry a LIMITED LIFETIME WARRANTY on all K.P.S. manufactured components; all parts not manufactured by Kalamazoo Packaging Systems will be subject to the original manufacturer's warranty.

Warranty

Kalamazoo Packaging systems, Inc. (KPS) agrees to furnish the purchaser, without charge, F.O.B. the factory, any part found to be defective in either material or workmanship within one (1) year from date of shipment, provided the purchaser gives immediate notice of any defect and description of that defect to KPS. KPS reserves the right to inspect any defective part to verify the defect and to determine probable cause of same.

The liability of KPS under this warranty is limited to furnishing replacements for defective parts, and unless otherwise agreed to in writing, the purchaser shall bear the expense of installation.

Failure of equipment or parts due to abuse, misuse, neglect, incorrect operating techniques or power line drops or surges shall not constitute failure because of defective material or workmanship, and are expressly excluded from this warranty.

The above is the only warranty with no other guarantees which extend beyond the above and the seller disclaims any implications including but not limited to a warranty of merchantability.

Assembly

Your Horizontal Winder has been assembled and tested at our manufacturing plant and released for shipment by a qualified technician. If the unit was shipped via common carrier or by our truck it may not be crated. **Any damage done in transit should be reported to the carrier immediately.** All our shipments are sent F.O.B. Grand Rapids, Michigan, therefore; the customer is responsible to settle any damage claims with the transportation company. Kalamazoo Packaging Systems will do everything possible to assist you in these matters.

Place the Winder in it's location.

Place the Main Control Cabinet on the left hand side of the Winder. (See drawing)

Plug the Winder into the Main Cabinet. (24-pin plug "B")

Move the input conveyor into place.

(the Input Conveyor is installed on the opposite side of the film doors on the Winder see drawing)

Plug the Input Conveyor into the Main Cabinet. (10-pin plug "A")

Plug in the 10-pin air connector from the input conveyor into the Winder

Move the Output 1 Conveyor into place.

(the Output 1 Conveyor is installed on the same side as the film doors on the Winder see drawing)

Plug the Output 1 Conveyor into the Main Cabinet. (10-pin plug "C")

Move the Output 2 Conveyor into place.

(the Output 2 Conveyor is installed inline with Output 1 Conveyor see drawing)

Plug the Output 2 Conveyor into the Main Cabinet. (10-pin plug "D")

Move the Storage Conveyor into place.

(the storage Conveyor is installed on a right angle to the Output 2 Conveyor see drawing)

Plug the Storage Conveyor into the Main Cabinet. (10-pin plug "E")

Wire in the main power drop cord 460/3/60hz. 20 amp. into the Main Control Cabinet.

(see wiring diagram.)

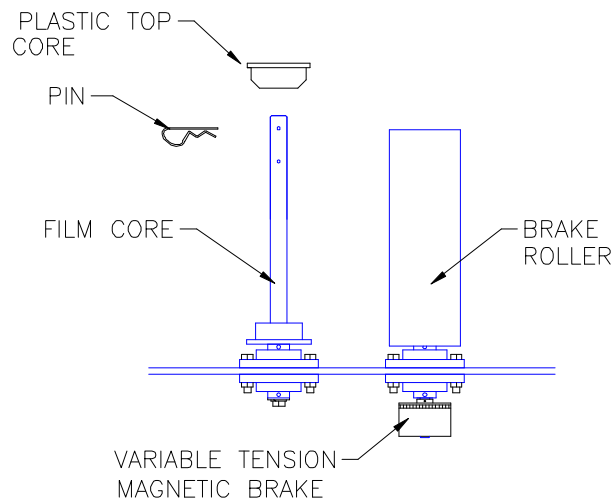
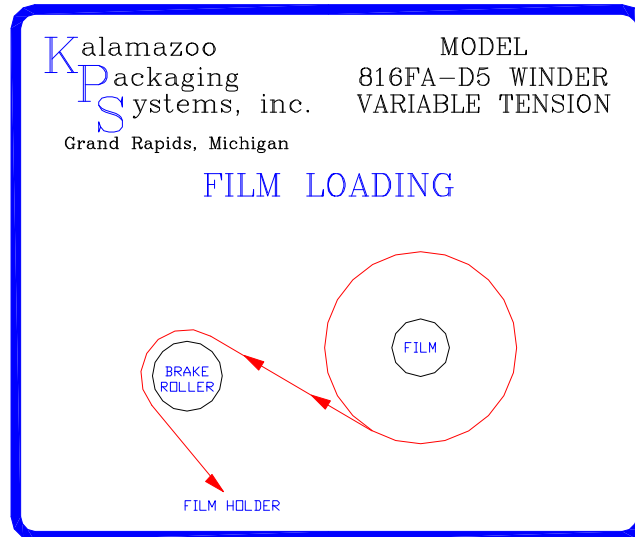
Air Source required 80 P.S.I.

Before starting the automatic cycle check all motors with the manual selector switches to make sure the motors run in the right direction and that all sensors are working.

Loading Film

The System is now ready for operation.

Your wrapper is equipped with a Dual Kalamazoo Variable Tension Film Delivery System. Place a roll of 5" stretch film on the film core holder and thread the film as shown on the diagram below. Once the film is loaded and the desired film tension is arrived at the film tension need not be adjusted again until the brand of film or the film thickness is changed.



FILM LOADING AND TENSIONING

Place a roll of 5" film onto the film holder so the film unwinds clockwise, then slide the plastic top core into place and install the pin into the hole.

(note: The film core does not change the film tension.)

Thread the film as shown on the diagram.

Adjust the variable tension magnetic brake to the film tension you desire. Loosen the two set screws in the brake with a 5/64" allen wrench adjust the tension and retighten the set screws.

OPERATING CONTROLS

- 1 **POWER ON:** Green lighted push button; turns on the machine power and lights up the power on button.
- 2 **POWER OFF:** Red push button; turns off the machine power.
- 3 **EMERGENCY STOP:** Red (push off/ turn to reset); turns off all motors, air cylinders and hot wire.
(Customer to install safety cable around system)
- 4 **CYCLE STOP:** Red mushroom push button; stops the wrap cycle.
(Start Console, Main Cabinet, and Bypass Console)
- 5 **CYCLE ENABLE:** Green push button; Turns on the Photo-eyes, Disengages the manual switches. (Will not turn on if a manual switch is on.)
- 6 **CYCLE START:** Green push button on Start Console; Starts the wrap cycle.
- 7 **LOAD FILM:** Blue push button; opens the film cutter air cylinders, moves the film in front of the Winder Ring film doors.
- 8 **RESET:** White push button; reset the machine. Moves the winder ring to home, Closes the film cutter.
- 9 **WINDER RING Auto/Manual:** 2-position selector switch; Manually runs the Winder ring. Disengaged in the wrap cycle program.
- 10 **INPUT CONV. FWD/AUOT/REV:** 3-position selector switch; Manually runs the Input conveyor. Disengaged in the wrap cycle program.
- 11 **OUTPUT 1 CONV. FWD/AUOT/REV:** 3-position selector switch; Manually runs the Output 1 conveyor. Disengaged in the wrap cycle program.
- 12 **OUTPUT 2 CONV. FWD/AUOT/REV:** 3-position selector switch; Manually runs the Output 2 conveyor. Disengaged in the wrap cycle program.
- 13 **STORAGE CONV. FWD/AUOT/REV:** 3-position selector switch; Manually runs the Storage conveyor. Disengaged in the wrap cycle program.

(If the Winder and/or Conveyors are in the manual mode the system will not cycle Enable)

OPERATING INSTRUCTIONS

START UP

- 1 Turn the Main Cabinet disconnect to ON.
- 2 Check to make sure you have 80 P.S.I. air to the machine.
- 3 Push the Power On Green lighted push button. The green power on light will come on.

FILM LOADING

- 1 Push the blue Load Film button. (The film holders will open)
- 2 Open the film doors and load the film pre the diagram on page #4.
- 3 Pull the film out and lay it across the film holders.
- 4 Push the white Reset button. (The film holders will close.)
- 5 The system is now ready for the first load.

WRAP CYCLE

- 1 Push the Cycle Enable button. (Main Cabinet)
- 2 Load the Tote onto the Input Conveyor Tote Lifter. Push down on the Tote Lifter foot switch, hold the Tote as the Lifter lifts and dumps the product onto the Input Conveyor. Let off on the Tote Lifter foot switch and the lift will return to the load position.
- 3 Straight the product and push the Cycle Start button. (Start Console)
- 4 The Input Conveyor will come on and move the product forward into the Winder.
- 5 After the product passes the Input Photo-eye #1 and after a set time the Input Conveyor will stop.
- 6 The Winder will start wrapping the product and will place the reinforcing wrap to the front edge of the product.
- 7 The Input and Output 1 Conveyors will come on and move the product through the Winder.
- 8 Once the product gets to Output 1 Photo-eye #2, Output 2 Conveyor will come on.
- 9 After the end of the product passes the Input Photo-eye #1 plus a set time the conveyors will stop.
- 10 The Winder will place the reinforcing wrap to the tail end of the product.
- 11 The Winder Ring will decal and the film will be cut.
- 12 Output 1 and Output 2 Conveyors will come on and move the product to the Output 2 Photo-eye #3.
- 13 The product Pushers will push the product onto the Storage Conveyor, the Storage Conveyor will move the product for a set time onto the Storage Conveyor .
- 14 This sequences will continue until the first product gets in front of the Storage Photo-eye #4. The system will wait until the product is removed.
- 15 If you would like to move the product from the front of the Storage Conveyor to the end, push the Bypass button and the product will be conveyed to the end of the Storage Conveyor.
(After the product is removed the system will go back into the cycle.)
- 17 End of wrap cycle.

GENERAL MAINTENANCE

Warning!!

MAKE SURE THAT POWER SUPPLY AND AIR SUPPLY IS DISCONNECTED BEFORE ATTEMPTING TO SERVICE ANY COMPONENTS. IF THE POWER DISCONNECT OR AIR DISCONNECT IS OUT OF SIGHT, LOCK IT IN THE OPEN POSITION AND TAG IT TO PREVENT UNEXPECTED APPLICATION OF POWER.

Cleaning

Periodically clean dirt accumulations from machine, especially around moving parts and drive components, preferably by vacuuming.

General

- Check and tighten any loose fasteners.
 - Check all electric connections and replace any worn or frayed cords.
 - Check all fuses and AC controllers.
 - Make sure the air is on.
-

Lubrication

Bearings

- The bearings have been greased at the factory and are ready to run. It is recommended that all mounted bearings and support wheels be relubricated with #3 lithium base grease every three months.

Chains

- Clean, lubricate and adjust chains every month. Chain should be lubricated with a penetrating type commercial chain lube.

Gear Reducers

- For new reducers, change the oil 120 hours after the reducer starts operating (based on 8 hours per day of operation). After the first oil change, change oil every 2000 operating hours, or every six months, whichever occurs first.

Temperature	Lubricant
25° - 125° F	AGMA #8
15° - 60° F	AGMA #7

Certain conditions (dust, water, etc.) may require a change of lubricating periods as dictated by experience.

adjustments

This is automatic system. Do not make adjustments without contacting Kalamazoo Packaging Systems.

TOUBLESHOOTING

When any problem develops, review the operating instructions. Diagnose specific problems and review the options below.

Machine not running at all.

1. Check wall receptacle for power.
2. Check all cord for cut. (Fork Lift Trucks damage cords.)
3. Check all fuses.
4. Check the air supply.
5. Check AC drive for faults.
6. Check all limit switches and sensors for damage, sticking or internal shorts.
7. Open cabinet and check that all relays are firmly seated in their bases.
8. Visually inspect for loose wires and for any signs of arcing or burning of any of the components.
9. The film door must be shut before the winder will run.
10. Winder ring noises, use taping wax around ring edge.
11. It is advisable to call for technical assistance at this time. (616) 534-2600.

Technical and Customer Service is available from Kalamazoo Packaging Systems, Inc., Monday thru Friday 7:30 A.M. to 4:00 P.M. (EST). Stock is maintained on parts to allow us to ship the same day on most orders.

If you have a problem, we want to know about it! Please call and report any difficulties you may encounter.

- **Local - (616) 534-2600**
- **National - (800) 253-4625**

Reliance AC Drive Programming

Winder

P 35 60 hz.

P 36 2

P 38 1

P 39 3.0

P 40 3.0

A 70 60 hz.

A 72 7 hz.

A 73 60 hz.

All Conveyor

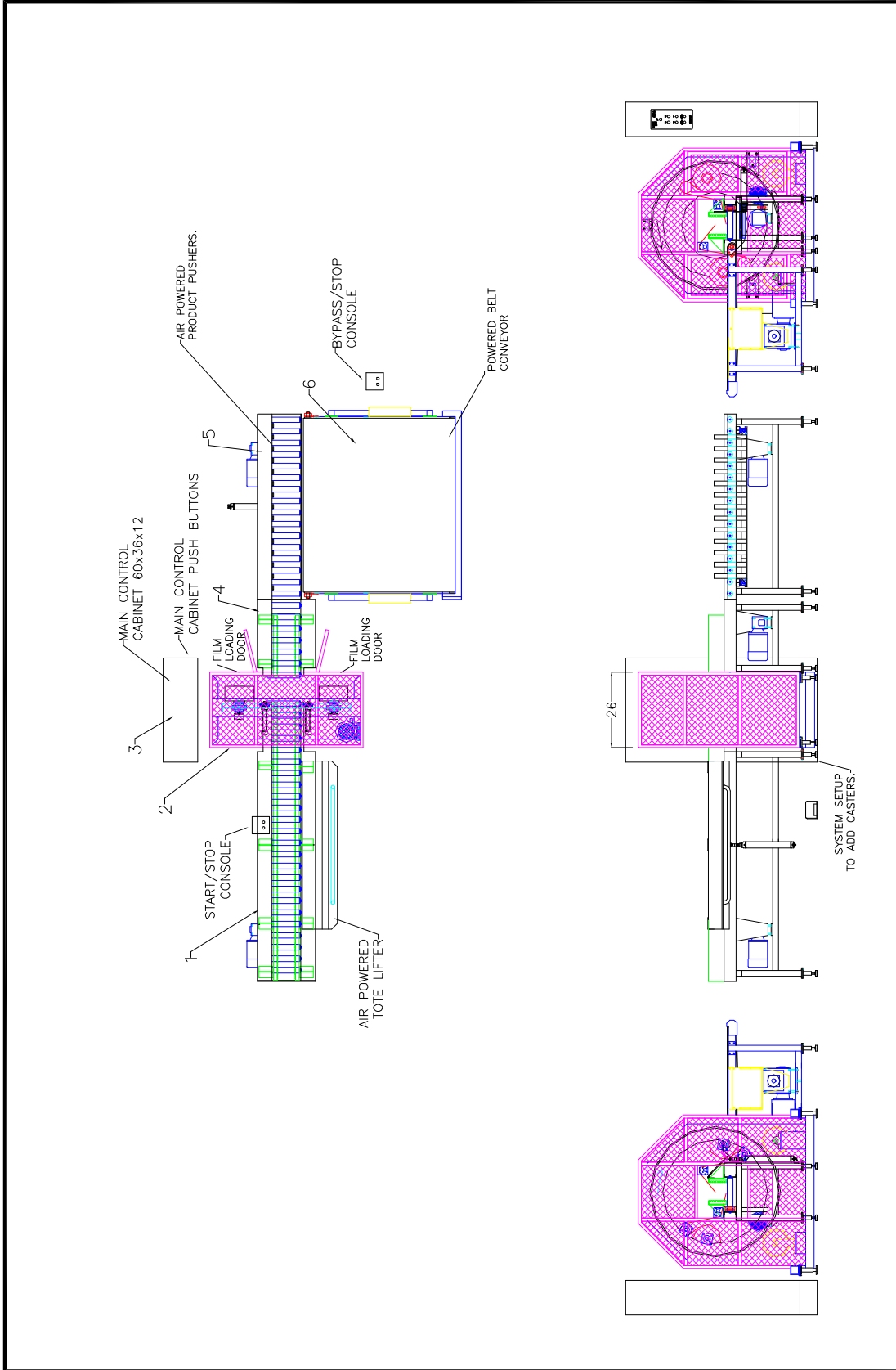
P 35 50 hz.


P 36 2

P 39 0.1

P 40 0.1

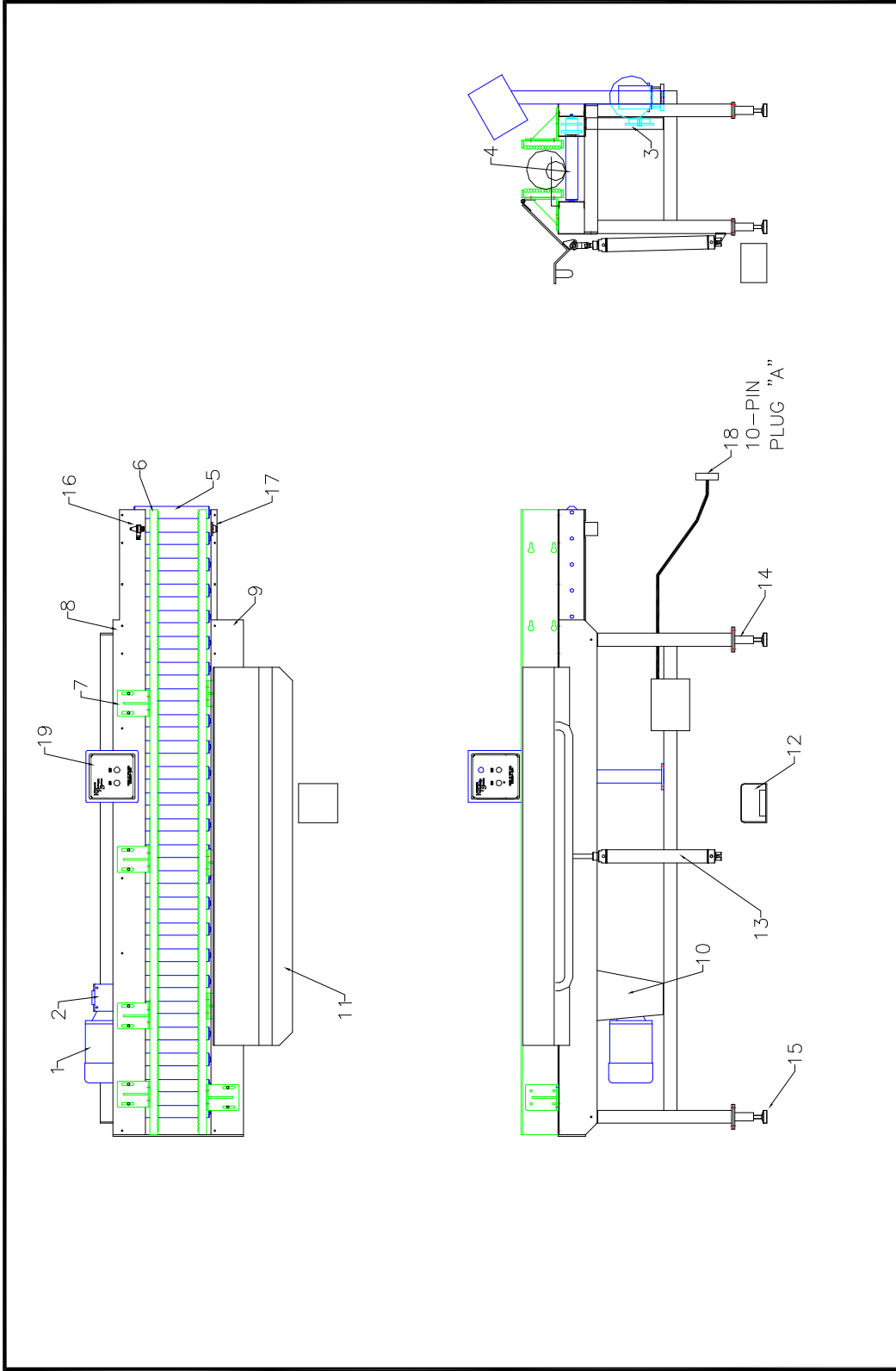
Potentiometer set at 50 hz.

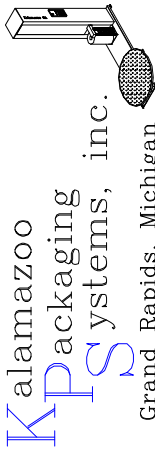


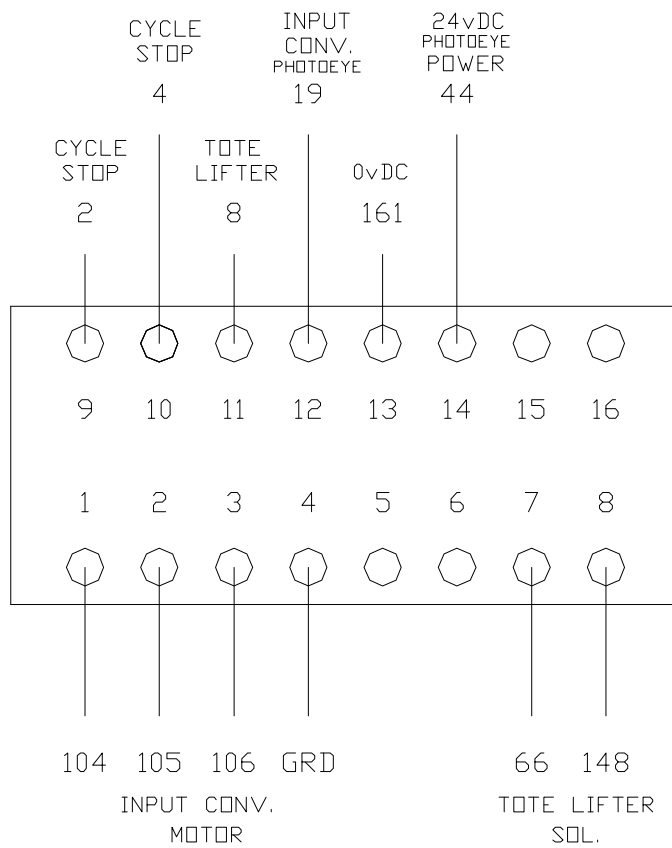
 <p>Kalamazoo Packaging Systems, inc. Grand Rapids, Michigan</p>	<p>Name: 816FA-5-76 FULLY-AUTOMATIC HORIZONTAL WINDER LAYOUT</p>	<p>Dwg.No.: 816FA-D5-L0</p>	<p>Tolerance: 0.040"</p>
	<p>Date: 07/10/06</p>	<p>Rev. Date:</p>	<p>THIS DRAWING IN DESIGN AND DETAIL IS OUR PROPERTY. ALL DESIGN AND INVENTION RIGHTS ARE RESERVED.</p>
<p>Drawn By: <i>Ty Ferris</i></p>	<p>Rev. By: TF</p>		

PARTS MANUAL: 816FA-D5 LAYOUT

ITEM	PART#	DESCRIPTION	PAGE#
1	816FA-D5-7C-IPC	INPUT ROLLER CONVEYOR	
2	816FA-D5	816 FULLY AUTOMATIC WINDER w/ DUAL 5" FILM	
3	816FA-D5-CC	MAIN CONTROL CABINET	
4	816FA-D5-7C-OPC1	OUTPUT 1 ROLLER CONVEYOR	
5	816FA-D5-7C-OPC2	OUTPUT 2 ROLLER CONVEYOR w/ AIR PUSHERS	
6	860PBC-50	STORAGE60" wide X 50" long POWERED BELT CONVEYOR	



 <p>Kalamazoo Packaging Systems, inc. Grand Rapids, Michigan</p>	Name: 816FA-D5 INPUT CONVEYOR LAYOUT	Dwg.No.: L0-816FA-D5-7C-IPC
	Date: 07/10/06	Rev. Date:
	Drawn By: Ty Ferris	Rev. By:
		Tolerance: 0.040"
<small>THIS DRAWING IN DESIGN AND DETAIL IS THE PROPERTY OF KALAMAZOO PACKAGING SYSTEMS, INC. AND INVENTION RIGHTS ARE RESERVED.</small>		

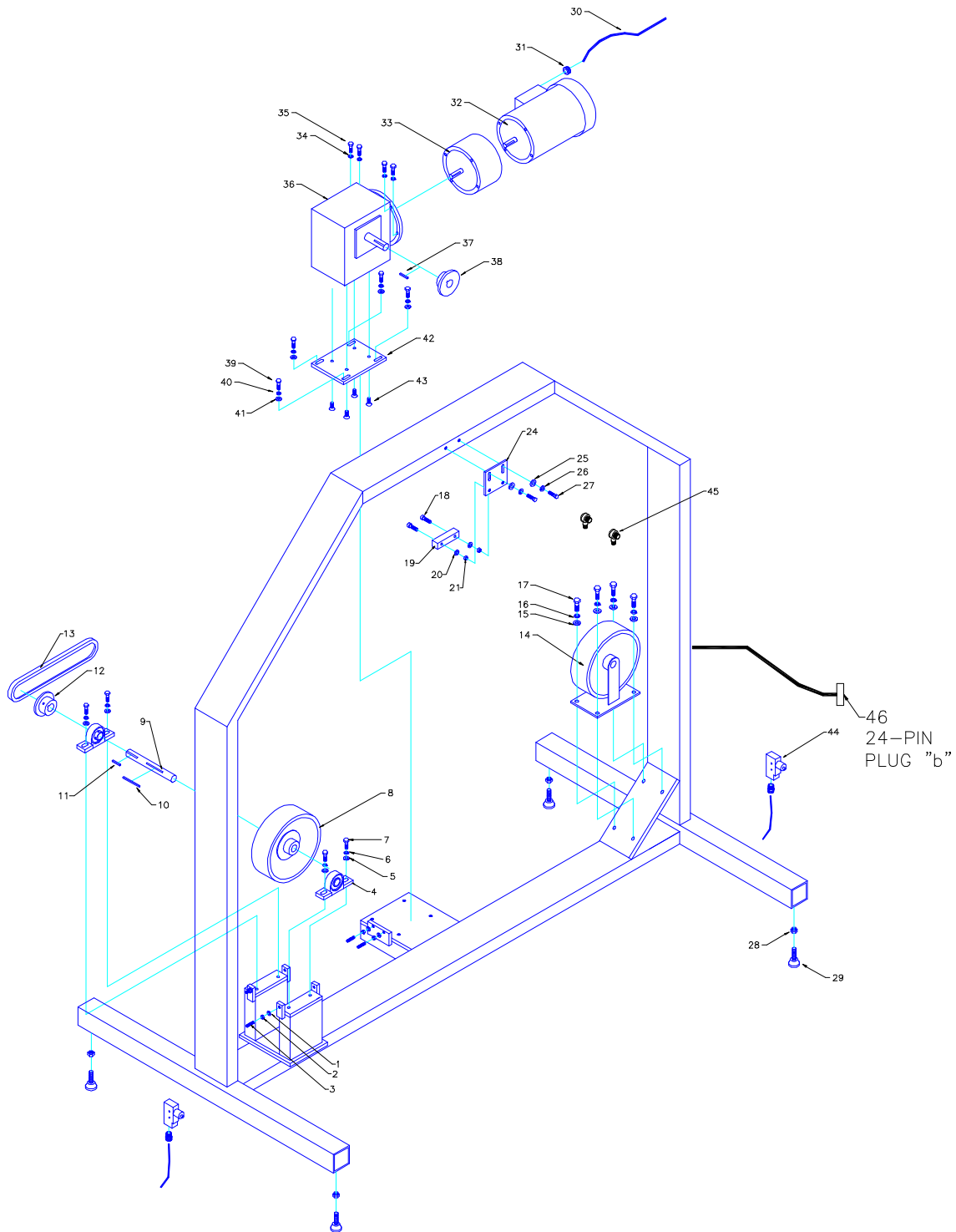


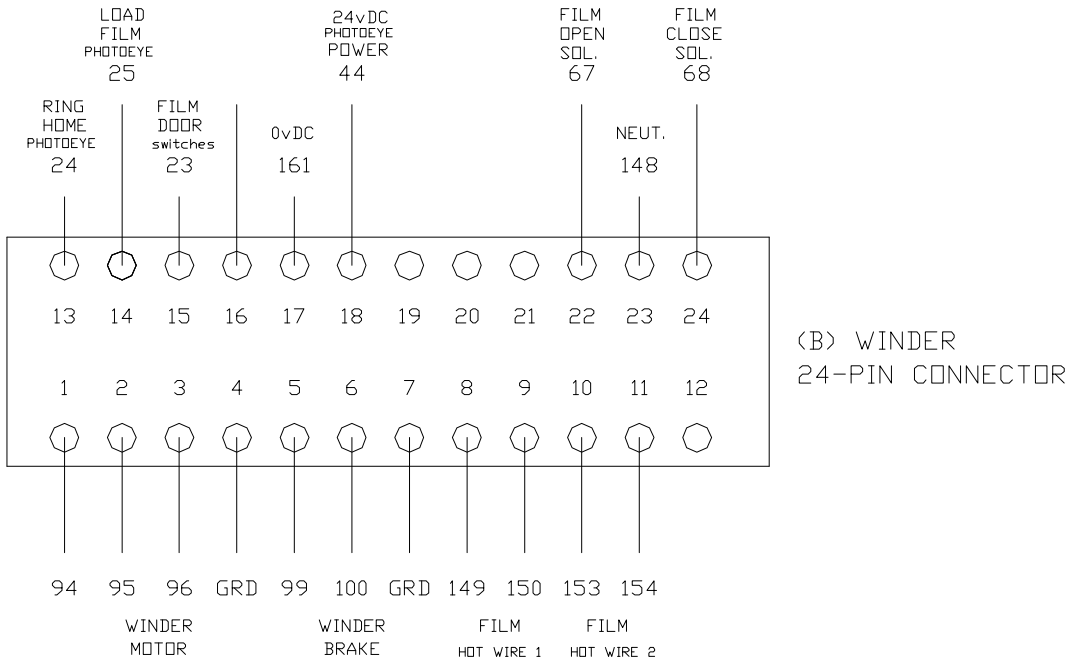
(A) INPUT CONVEYOR
16-PIN CONNECTOR

**PARTS MANUAL: 816FA-D5-7C-IPC
INPUT CONVEYOR LAYOUT**

ITEM	PART/DWG. #	GRAINGER	DESCRIPTION	QTY
1	105316		1/2hp 230-480/3/60 TEFC BALDOR	1
2	106101	4RN71	60:1 R/A REDUCER 1.33CD 56C DAYTON (F2)	1
3	107962		40B26x5/8" DRIVE SPROCKET	1
4	816FA-D5-1.9CRS		1.9" CONVEYOR ROLLER w/ 40A18 x 13"	23
5	816FA-D5-1.9CR		1.9" CONVEYOR ROLLER x 13"	1
6	VG-684-PL-6-08		BEADWALL x 8'	2
7	816FA-D5-7C-IPC-08		BEADWALL MOUNTS	8
8	816FA-D5-7C-IPC-02a		INPUT CONVEYOR ROLLER CHAIN GUARD	1
9	816FA-D5-7C-IPC-04		INPUT CONVEYOR TOTE LIFT MOUNT	1
10	816FA-D5-7C-IPC-05		INPUT CONVEYOR DRIVE CHAIN GUARD	1
11	816FA-D5-7C-IPC-06		TOTE LIFTER w/ HANDLE	1
12	210700	5X361	TOTE LIFTER FOOT SWITCH	1
12	210710	2W811	TOTE LIFTER FOOT SWITCH GUARD	1
13	703085		2" BORE x 14" STROKE CYLINDER (TOTE)	1
14	800-CCMF		CONVEYOR FOOT MOUNT	4
15	122848		2" FEET w/ LAG HOLES	4
16	213180		BANNER T18 POLARIZED SENSOR	1
16	213181		BANNER BRACKET	2
16	213257		4-PIN CABLE	1
17	213182		2" REFLECTOR	1
18	210310-M		10-PIN QUICK CONNECTOR (FEMALE)	1
19	816FA-D5-7C-IPC-09		START CONSOLE BOX	1
19	207002		RED MUSHROOM PUSH BUTTON (STOP)	1
19	207069		GREEN LIGHTED PUSH BUTTON (START)	1
19	816FA-D5-DECAL-SC		SART CONSOLE DECAL	1

Kalamazoo Packaging Systems Model # 816FA-D5 Horizontal Winder Base





PARTS MANUAL: 816FA-D5 HORIZONTAL WINDER

ITEM	PART #	GRAINGER	DESCRIPTION	QTY
1	L48		5/16 USS WASHER	4
2	L47		5/16 LOCK WASHER	4
3	L54		5/16-18x 1-1/2" SET SCREW	4
4	121250	5X692	1" PILLOW BLOCK BEARING	2
5	L65		3/8 USS WASHER	4
6	L64		3/8 LOCK WASHER	4
7	L83		3/8-16x 1-1/2" HEX HEAD CAP SCREW	4
8	122809		10"x 3" DRIVE WHEEL w/ HUB	1
9	800V-DS		800V DRIVE SHAFT	1
10	L3		1/4"x 1/4"x 2-1/2" KEYWAY	1
11	L3		1/4"x 1/4"x 1" KEYWAY	1
12	108111		50BT11 SPROCKET	1
12	108132		1610X1" BUSHING	1
13	108500	6L074	# 50 CHAIN	1
14	122800		10"x 3" IDLER WHEEL w/ TAPERED BRG.	1
15	L96		7/16 USS WASHER	4
16	L95		7/16 LOCK WASHER	4
17	L99		7/16-14 x 1-1/2" HEX HEAD CAP SCREW	4
18	L73		3/8-24 x 1-1/2" ALLEN HEAD CAP SCREW	12
19	800SLIDE		800 SLIDE	6
20	L48		5/16 USS WASHER	12
21	L61		3/8-24 NYLOCK JAM NUT	12
22	L48		5/16 USS WASHER	12
23	L61		3/8-24 NYLOCK JAM NUT	12
24	800S-HOLDER		800 SLIDE HOLDER	2
24a	816FA-D5-LSH		816FA-D5 LOWER SLIDE HOLDER	4
25	L65		3/8 USS WASHER	12

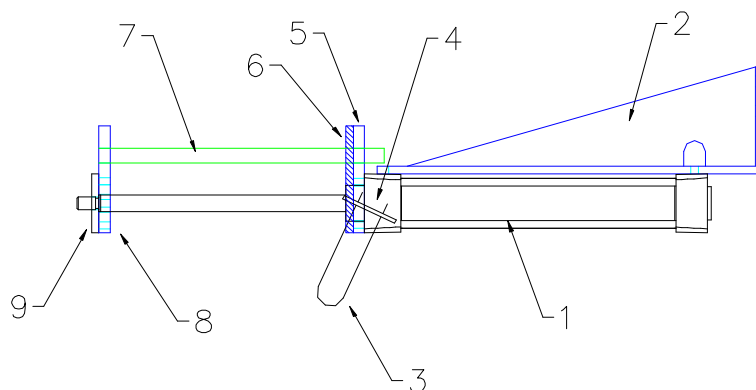
PARTS MANUAL: 816FA-D5 HORIZONTAL WINDER

ITEM	PART#	GRAINGER	DESCRIPTION	QTY
26	L64		3/8 LOCK WASHER	12
27	L71		3/8-24x 1-1/4" HEX HEAD CAP SCREW	12
28	L125		1/2-13 NUT	4
29	122849		1/2-13 PLASTIC FEET 3" w/ LAG HOLES	4
30	20990	1W926	14/3 SJ CORD	1
31	210340	2A247	CORD GRIP	1
32	105341		1hp 480v AC MOTOR 56C SUPER-E	1
33	107303		480v 56C FACE MOTOR BRAKE	1
34	L64		3/8 LOCK WASHER	4
35	L80		3/8-16 x 1" HEX HEAD CAP SCREW	4
36	106606		5:1 R/A REDUCER 1.75CD 56C FACE	1
37	L3		1/4"x 1/4"x 1" KEYWAY	1
38	108114		50BT14 SPROCKET	1
38	108130		1610x7/8" BUSHING	1
39	L82		3/8-16 x 1-1/2" HEX HEAD CAP SCREW	4
40	L64		3/8 LOCK WASHER	4
41	L65		3/8 USS WASHER	4
42	816FA-D5-MM		816FA-D5 MOTOR MOUNT	1
43	L50		5/16-18 x 1" FLAT HEAD	4
44	210852	2W938	LIMIT SWITCH PLUNGER (FILM DOOR)	2
45	213180		BANNER T18 POLARIZED SENSOR (RING HOME and LOAD FILM)	2
46	210312		24-PIN QUICK CONNECTOR (FEMALE)	1

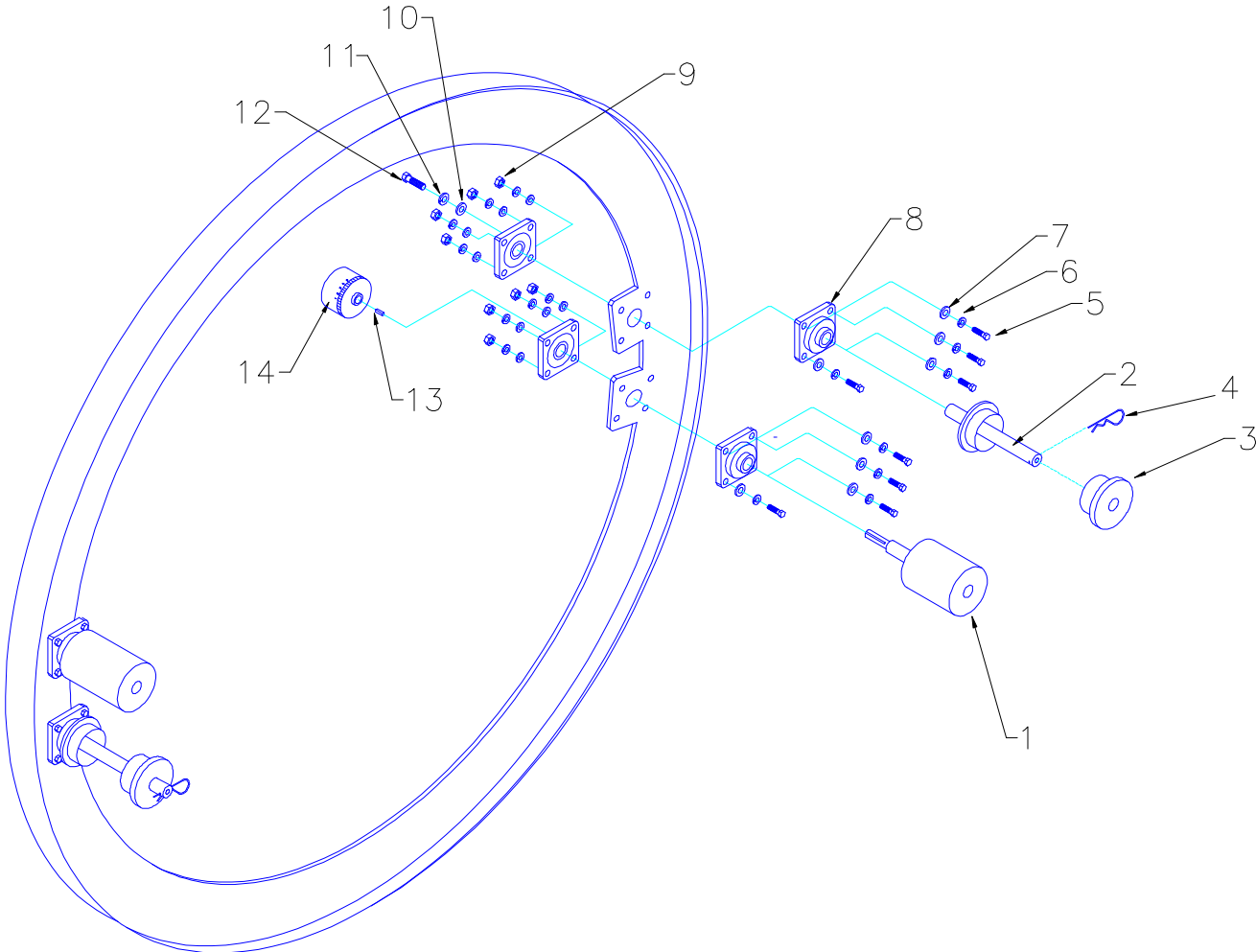
PARTS MANUAL: 816FA-D5 FILM HOLDER and CUTTER

ITEM	PART# / DWG.#	DESCRIPTION	QTY
1	270115	CUTTER CYLINDER 1-1/2" BORE x 8" STROKE	1
2	850PB60-IN-03	FILM CUTTER CYLINDER MOUNT	2
3	131009	4-1/2" TUBE HOT WIRE	1
4	820FAC-20-FC5	HOT WIRE MOUNTING BRACKET	1
5	820FAC-20-FC1	FILM CUTTER CYLINDER FRONT PLATE	1
6		1/4"x 3-1/4"x 3-5/8" FOAM RUBBER	1
7	800071x26	1/2" TEFLON SHAFT x 26.0"	2
8	820FAC-20-FC2	FILM CUTTER CYLINDER END PLATE	1
9	820FAC-20-FC3	FILM CUTTER CYLINDER END CAP	1

Kalamazoo Packaging System
 Model # 816FA-D5
 Film Holder and Cutter



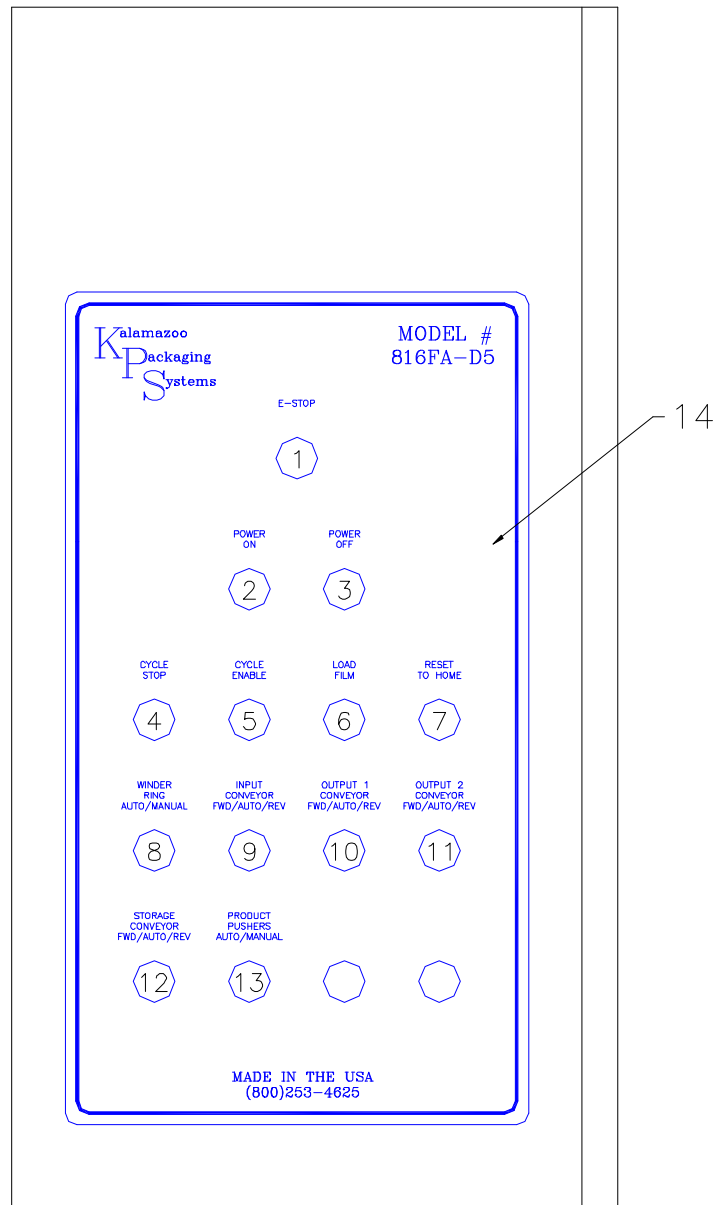
Kalamazoo Packaging Systems
Model #816FA-D5
DUAL 5" Variable Tension



PARTS MANUAL: 816FA-D5 WINDER RING

ITEM	PART #	DESCRIPTION	QTY
1	623067	800 5" WINDER VARIABLE TENSION 4" BRAKE ROLLER	2
2	623073	800 5" WINDER VARIABLE TENSION FILM CORE w/ PIN	2
3	623078	3" PLASTIC TOP CORE	2
4	623079	3/16" HITCH PIN	2
5	L102	7/16-20 x 2-1/4" HHCS	16
6	L95	7/16 LOCK WASHER	16
7	L97	7/16 SAE WASHER	18
8	121140	1" 4-BOLT FLANGE BEARING	8
9	L165	7/16-20 NYLOCK NUT	16
10	L111	1/2" USS WASHER	2
11	L110	1/2" LOCK WASHER	2
12	L128	1/2-13 x 1" HHCS	2
13	L2	3/16"x 3/16"x 3/4" KEYWAY	2
14	130550	5/8" FINISH BORE MAGNETIC BRAKE	2

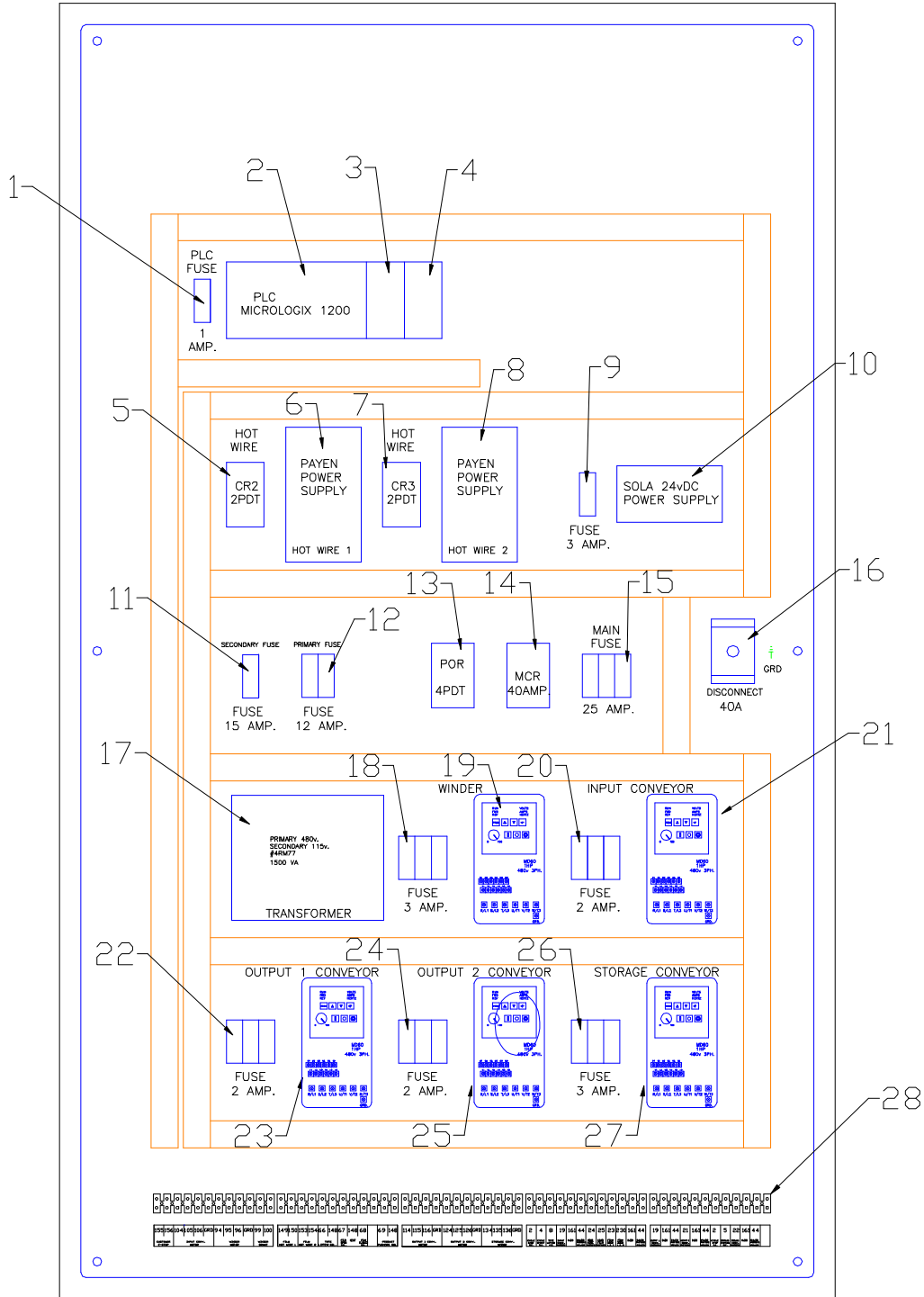
Kalamazoo Packaging System
MODEL # 816FA-D5
CONTROL CABINET PUSH BUTTONS



PARTS MANUAL: 816FA-D5 CONTROL CABINET

ITEM	PART #	DESCRIPTION	QTY
1	207110	PUSH OFF/ TURN TO RESET (E-STOP)	1
2	207069	GREEN LIGHTED PUSH BUTTON (POWER ON)	1
3	207055	RED BUTTON (POWER OFF)	1
4	207050	RED MUSHROOM PUSH BUTTON (CYCLE STOP)	1
5	207001	GREEN PUSH BUTTON (CYCLE ENABLE)	1
6	207056	BLUE PUSH BUTTON (FILM LOAD)	1
7	207057	WHITE PUSH BUTTON (RESET)	1
8	207100	2-POS. SELECTOR (WINDER AUTO/MANUAL)	1
9	207103	3-POS. SELECTOR (INPUT CONVEYOR FWD./AUTO/REV.)	1
10	207103	3-POS. SELECTOR (OUTPUT 1 CONVEYOR FWD./AUTO/REV.)	1
11	207103	3-POS. SELECTOR (OUTPUT 2 CONVEYOR FWD./AUTO/REV.)	1
12	207103	3-POS. SELECTOR (STORAGE CONVEYOR FWD./AUTO/REV.)	1
13	207100	2-POS. SELECTOR (PRODUCT PUSHERS AUTO/MANUAL)	1
14	816FA-D5- DECAL-MC	816FA-D5 MAIN CONTROL CABINET DECAL	1

Kalamazoo Packaging System 816FA-D5 SUB PANEL LAYOUT

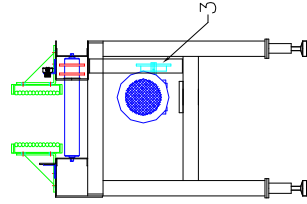
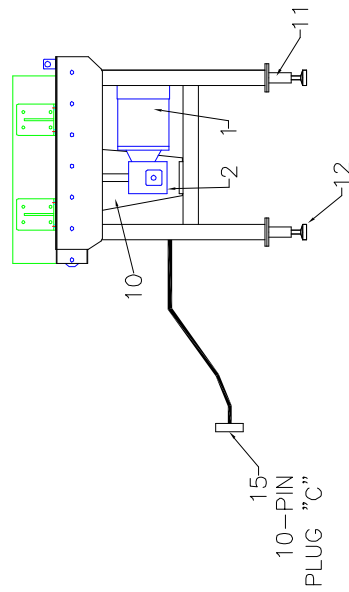
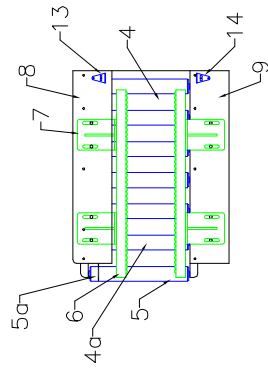


PARTS MANUAL: 816FA-D5 SUBPANEL

ITEM	PART #	DESCRIPTION	QTY
1	210776	1 AMP FUSE (PLC)	1
2	213720	AB MICROLOGIX 1200 PLC	1
3	213721	AB EXTENSION MODULE INPUT	1
4	213722	AB EXTENSION MODULE OUTPUT	1
5	208250	2PDT RELAY (HOT WIRE 1)	1
5	208260	8-PIN BASE	1
6	131201	PAYNE CONTROL (HOT WIRE 1)	1
7	208250	2PDT RELAY (HOT WIRE 2)	1
7	208260	8-PIN BASE	1
8	131201	PAYNE CONTROL (HOT WIRE 2)	1
9	21077	3 AMP FUSE (24vDC POWER)	1
10	131175	24vDC 5AMP POWER SUPPLY	1
11	210786	15 AMP FUSE (SECONDARY)	1
12	210784	12 AMP FUSE (PRIMARY)	2
13	210820	2 AMP FUSE (PRIMARY)	2
14	208250	2PDT RELAY (WINDER BRAKE)	1
14	208260	8-PIN BASE	1
15	208450	4PDT RELAY (POWER OFF RALEY)	1
16	208084	32 AMP MAIN CONTROL RELAY	1
17	210794	30 AMP. (MAIN)	3
18	210744	DISCONNECT 4 N.O. 40 AMP	1
18	210747	DISCONNECT SHAFT	1
18	210746	DISCONNECT SELECTOR HANDLE	1

PARTS MANUAL: 816FA-D5 SUBPANEL

ITEM	PART #	DESCRIPTION	QTY
19	209108	TRANSFORMER 1500VA	1
20	210777	3 AMP. FUSE (WINDER)	3
21	131931	RELIANCE 1hp. 480v AC DRIVE (WINDER)	1
22	210810	2AMP. FUSE (INPUT CONVEYOR)	3
23	131930	RELIANCE 1/2hp. 480v AC DRIVE (INPUT CONV.)	1
24	210810	2AMP. FUSE (OUTPUT 1 CONVEYOR)	3
25	131930	RELIANCE 1/2hp. 480v AC DRIVE (OUTPUT 1 CONV.)	1
26	210810	2AMP. FUSE (OUTPUT 2 CONVEYOR)	3
27	131930	RELIANCE 1/2hp. 480v AC DRIVE (OUTPUT 2 CONV.)	1
28	210777	3 AMP. FUSE (STORAGE)	3
29	131931	RELIANCE 1hp. 480v AC DRIVE (STORAGE)	1
30	209700	12 POLE TERMINAL STRIP	5



Kalamazoo
PS Packaging Systems, inc.
 Grand Rapids, Michigan

Name: 816FA-D5 OUTPUT 1 CONVERTER LAYOUT

Dwg.No.: L0-816FA-D5-7C-0PC1

Date: 07/10/06

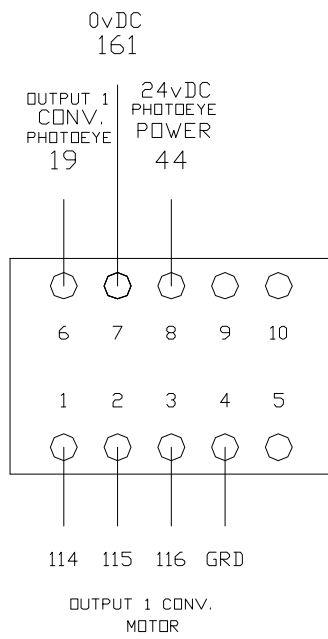
Rev. Date:

Drawn By: Ty Ferris

Rev. By:

Tolerance: 0.040"

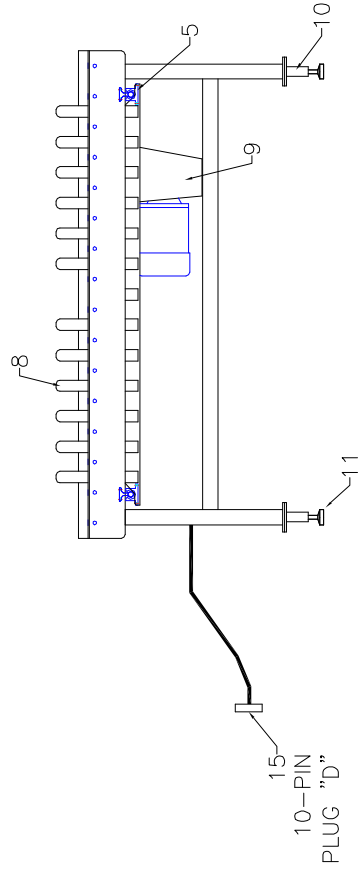
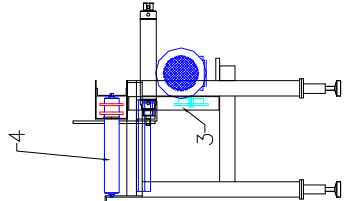
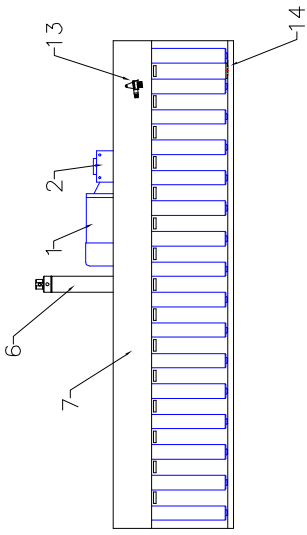
THIS DRAWING IN DESIGN AND DETAIL IS OUR PROPERTY. ALL DESIGN AND INVENTION RIGHTS ARE RESERVED.



(C) OUTPUT 1 CONVEYOR
10-PIN CONNECTOR

PARTS MANUAL: 816FA-D5-7C-OPC1 OUTPUT 1 CONVEYOR LAYOUT

ITEM	PART/DWG. #	GRAINGER	DESCRIPTION	QTY
1	105316		1/2hp 230-480/3/60 TEFC BALDOR	1
2	106101	4RN71	60:1 R/A REDUCER 1.33CD 56C DAYTON	1
3	107962		40B26x5/8" DRIVE SPROCKET	1
4	816FA-D5-1.9CRS		1.9" CONVEYOR ROLLER w/ 40A18 x 13"	5
4a	816FA-D5-1.9CRS-01		1.9" CONVEYOR ROLLER w/ 40A18 x 13" DRIVE ROLLER w/ GROVE FOR BAND	1
5	816FA-D5-1.9CR-01		1.9" CONVEYOR ROLLER x 13" SLAVE ROLLER w/ GROVE FOR BAND	1
5a	121460		3/16 dia. X 83A x 9-3/4" SLAVE BELT	1
6	VG-684-PL-6-02		BEADWALL x 2'	2
7	816FA-D5-7C-IPC-08		BEADWALL MOUNTS	4
8	816FA-D5-7C-OPC1-02a		OUTPUT 1 CONVEYOR ROLLER CHAIN GUARD	1
9	816FA-D5-7C-OPC1-04		OUTPUT 1 CONVEYOR LEFT MOUNT	1
10	816FA-D5-7C-IPC-05		OUTPUT 1 CONVEYOR DRIVE CHAIN GUARD	1
11	800-CCMF		CONVEYOR FOOT MOUNT	4
12	122848		2" FEET w/ LAG HOLES	4
13	213180		BANNER T18 POLARIZED SENSOR	1
13	213181		BANNER BRACKET	2
13	213257		4-PIN CABLE	1
14	213182		2" REFLECTOR	1
15	210310-M		10-PIN QUICK CONNECTOR (FEMALE)	1



15
10-PIN
PLUG "D"

Kalamazoo
KPS Packaging systems, inc.
 Grand Rapids, Michigan

Name: 816FA-D5 OUTPUT 2 CONVEYOR LAYOUT
 Date: 07/10/06
 Drawn By: Ty Ferris

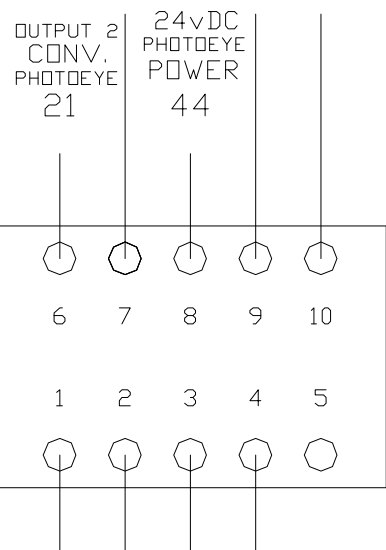
Dwg.No.: 10-816FA-D5-7C-0PC2
 Rev. Date:
 Rev. By.

Tolerance: 0.040"

THIS DRAWING IN DESIGN AND DETAIL IS THE PROPERTY OF KALAMAZOO PACKAGING SYSTEMS, INC. AND ALL RIGHTS ARE RESERVED.

PRODUCT PUSHER

0vDC SOL.
161 69 148

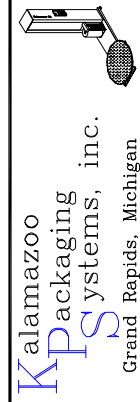
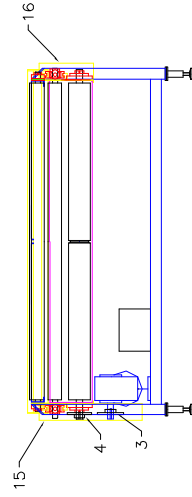
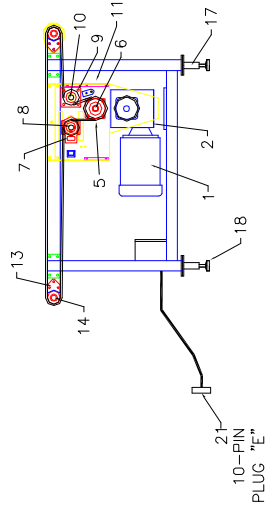
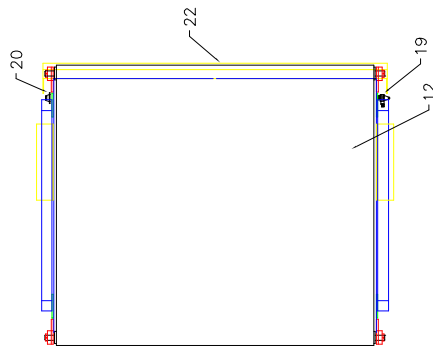


<D> OUTPUT 2 CONVEYOR
10-PIN CONNECTOR

124 125 126 GRD
OUTPUT 2 CONV.
MOTOR

PARTS MANUAL: 816FA-D5-7C-OPC2 OUTPUT 2 CONVEYOR LAYOUT

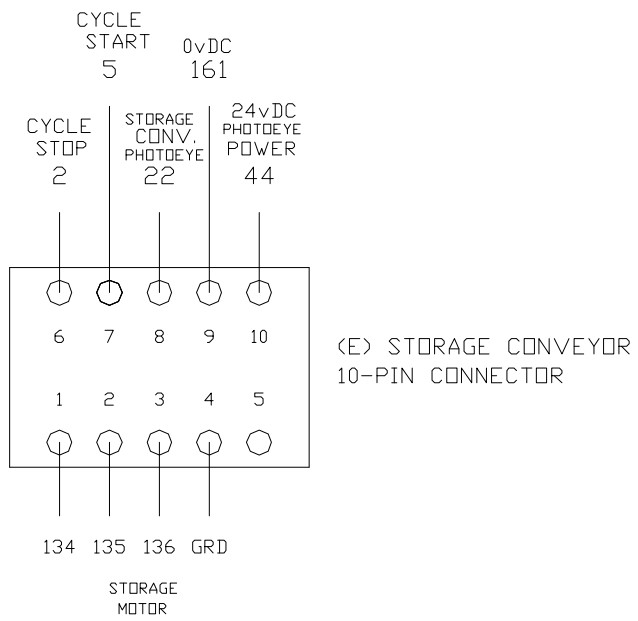
ITEM	PART/DWG. #	GRAINGER	DESCRIPTION	QTY
1	105316		1/2hp 230-480/3/60 TEFC BALDOR	1
2	106101	4RN71	60:1 R/A REDUCER 1.33CD 56C DAYTON (F2)	1
3	107962		40B26x5/8" DRIVE SPROCKET	1
4	816FA-D5-1.9CRS		1.9" CONVEYOR ROLLER w/ 2)40A18 x 13"	16
5	121200		PRODUCT PUSHER: LINEAR BRG. and 12" SLIDE	2 SET
6			2" BORE x 14" STROKE AIR CYLINDER	1
7	816FA-D5-7C-OPC2-02a		OUTPUT 2 CONVEYOR ROLLER CHAIN GUARD	1
8	816FA-D5-7C-OPC2-07		PRODUCT PUSHER	1
9	816FA-D5-7C-IPC-05		OUTPUT 1 CONVEYOR DRIVE CHAIN GUARD	1
10	800-CCMF		CONVEYOR FOOT MOUNT	4
11	122848		2" FEET w/ LAG HOLES	4
12	213180		BANNER T18 POLARIZED SENSOR	1
13	213181		BANNER BRACKET	2
13	213257		4-PIN CABLE	1
14	213182		2" REFLECTOR	1
15	210310-M		10-PIN QUICK CONNECTOR (FEMALE)	1



Name: 860PB-50" POWERED BELT CONVEYOR LAYOUT
Date: 07/11/06
Drawn By: Ty Ferris

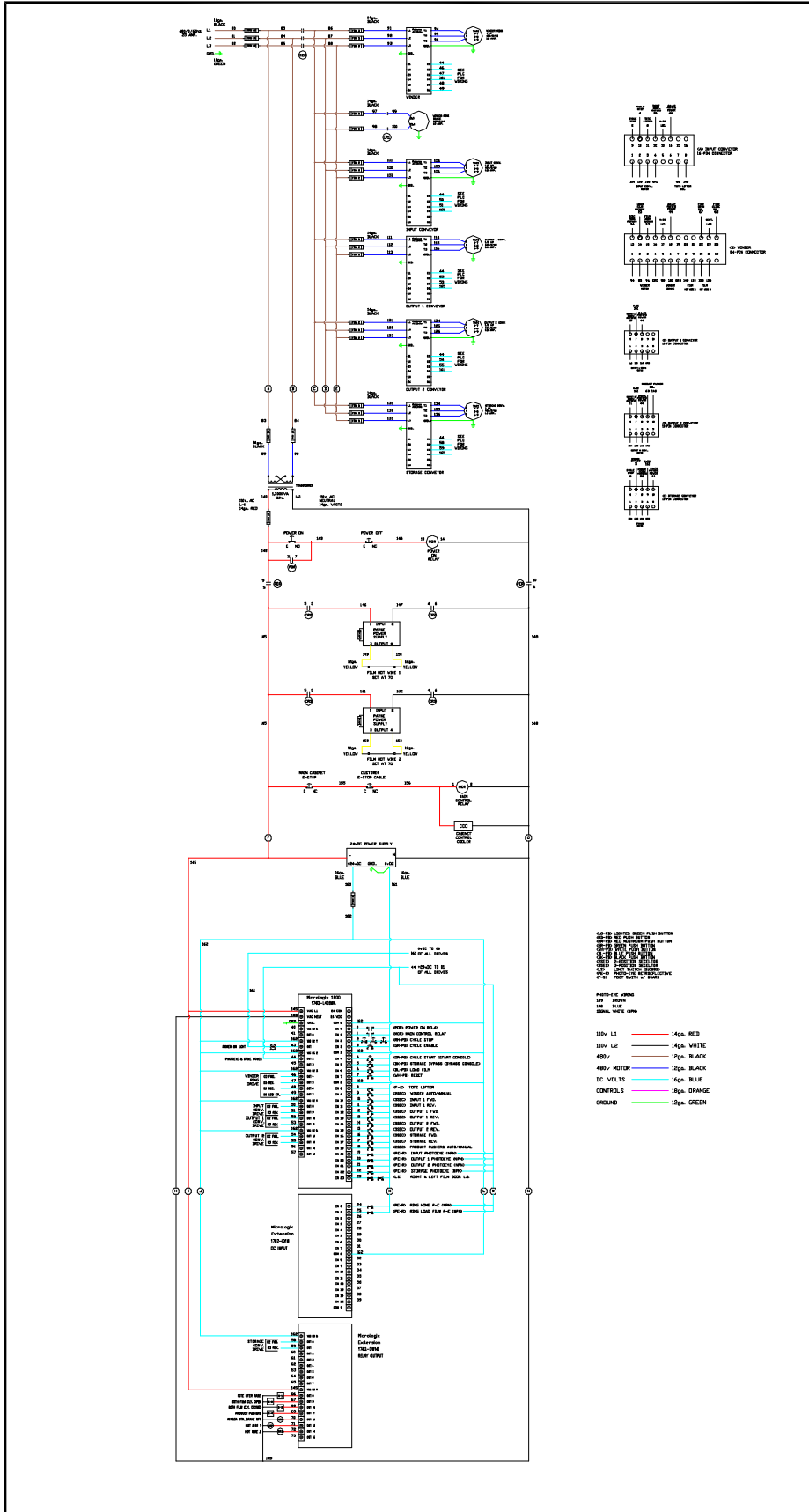
Dwg.No.: 860PB-50-LO
Rev. Date:
Rev. By:

Tolerance: 0.040"
THIS DRAWING IN DESIGN AND DETAIL IS OUR PROPERTY. ALL DESIGN AND INVENTION RIGHTS ARE RESERVED.

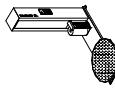


**PARTS MANUAL: 860PBC-50
POWERED BELT CONVEYOR (STORAGE)**

ITEM	PART #	DESCRIPTION	QTY
1	105337	1HP. 480/3/60HZ. AC MOTOR 56C FACE	1
2	106626	BOSTON R/A REDUCER 40:1 2.62 CD 56C FACE	1
3	108059	DRIVE SPROCKET 50B12x1-1/8"	1
4	108064	DRIVEN SPROCKET 50B26x1"	1
5	121140	1" 4-BOLT FLANGE BEARING	2
6	860PMC-15	860PBC 4" DRIVE ROLLER	1
7	121062	1" TAKE-UP BEARING	2
8	860PBC-16	860PBC 2-1/2" TAKE-UP ROLLER	1
9	121140	1" 4-BOLT FLANGE BEARING	2
10	860PBC-14	860PBC 2-1/2" IDLER ROLLER	1
11	860PBC-08	860PBC DRIVE ROLLER END COVER	2
12	860PBC-50-BELT	860PBC-50 120 PVC BELT (BLACK SMOOTH TOP)	1
13	121054	1" CHEVRON BEARING	4
14	860PBC-14	860PBC 2-1/2" END ROLLER	2
15	860PBC-05	DRIVE SIDE GUARD	1
16	860PBC-06	DRIVEN SIDE GUARD	1
17	800-CCMF	CONVEYOR FOOT MOUNT	4
18	122848	2" FEET w/ LAG HOLES	4
19	213180	BANNER T18 POLARIZED SENSOR	1
19	213181	BANNER BRACKET	2
19	213257	4-PIN CABLE	1
20	213182	2" REFLECTOR	1
21	210310-M	10-PIN QUICK CONNECTOR (FEMALE)	1
22	860PBC-09	NOSE CONE GUARD	1



Kalamazoo
 Packaging
 systems, inc.
 Grand Rapids, Michigan



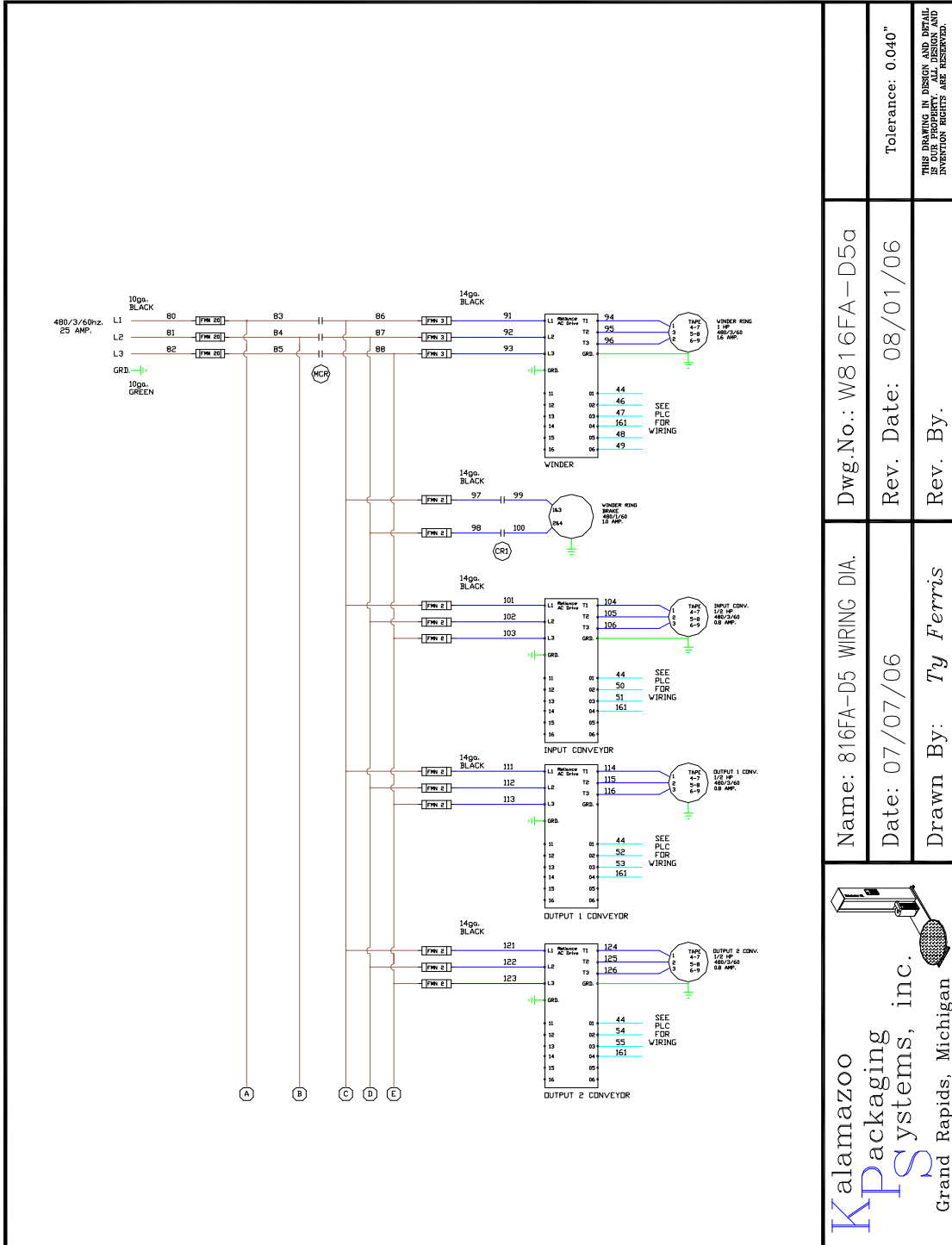
Name: 816FA-D5 WIRING DIA. Dwg.No.: W816FA-D5

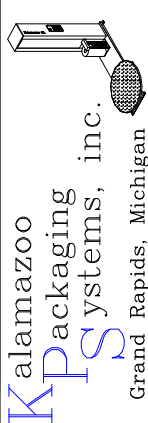
Date: 07/06/06 Rev. Date:

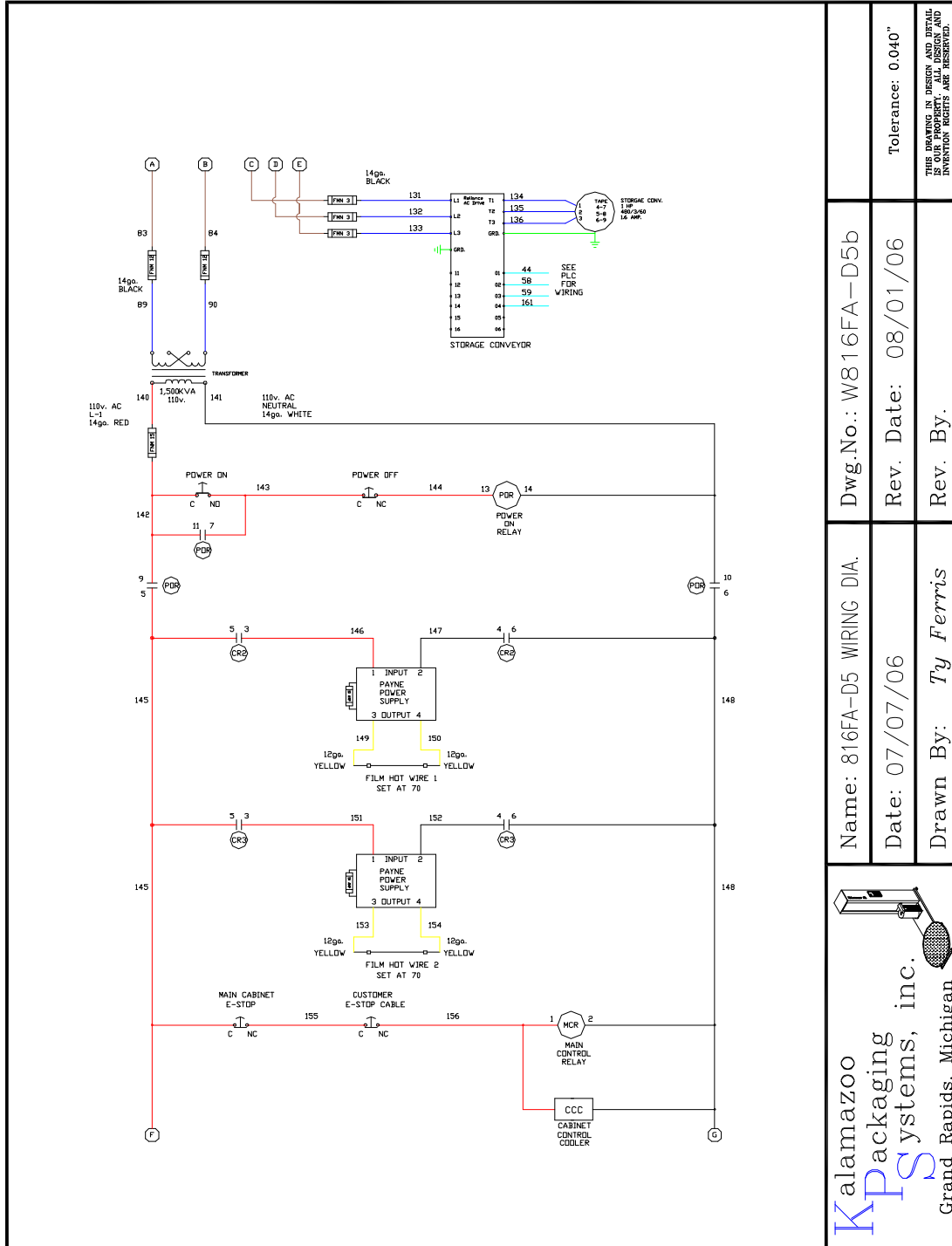
Drawn By: Ty Ferris Rev. By:

Tolerance: 0.040"

THIS DRAWING IN DESIGN AND DETAIL IS OUR PROPERTY. ALL DESIGN AND INVENTION RIGHTS ARE RESERVED.



Name: 816FA-D5 WIRING DIA.		Dwg.No.: W816FA-D5a	
Date: 07/07/06		Rev. Date: 08/01/06	
Drawn By: <i>Ty Ferris</i>		Rev. By:	
 Kalamazoo Packaging Systems, Inc. Grand Rapids, Michigan		Tolerance: 0.040"	
		THIS DRAWING IN DESIGN AND DETAIL IS UNLESS OTHERWISE SPECIFIED AND INVENTION RIGHTS ARE RESERVED.	



Dwg.No.: W816FA-D5b

Name: 816FA-D5 WIRING DIA.

Date: 07/07/06

Drawn By: Ty Ferris

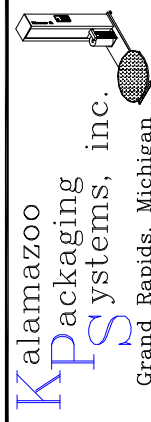
Rev. Date: 08/01/06

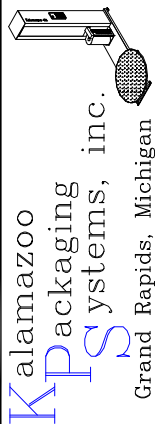
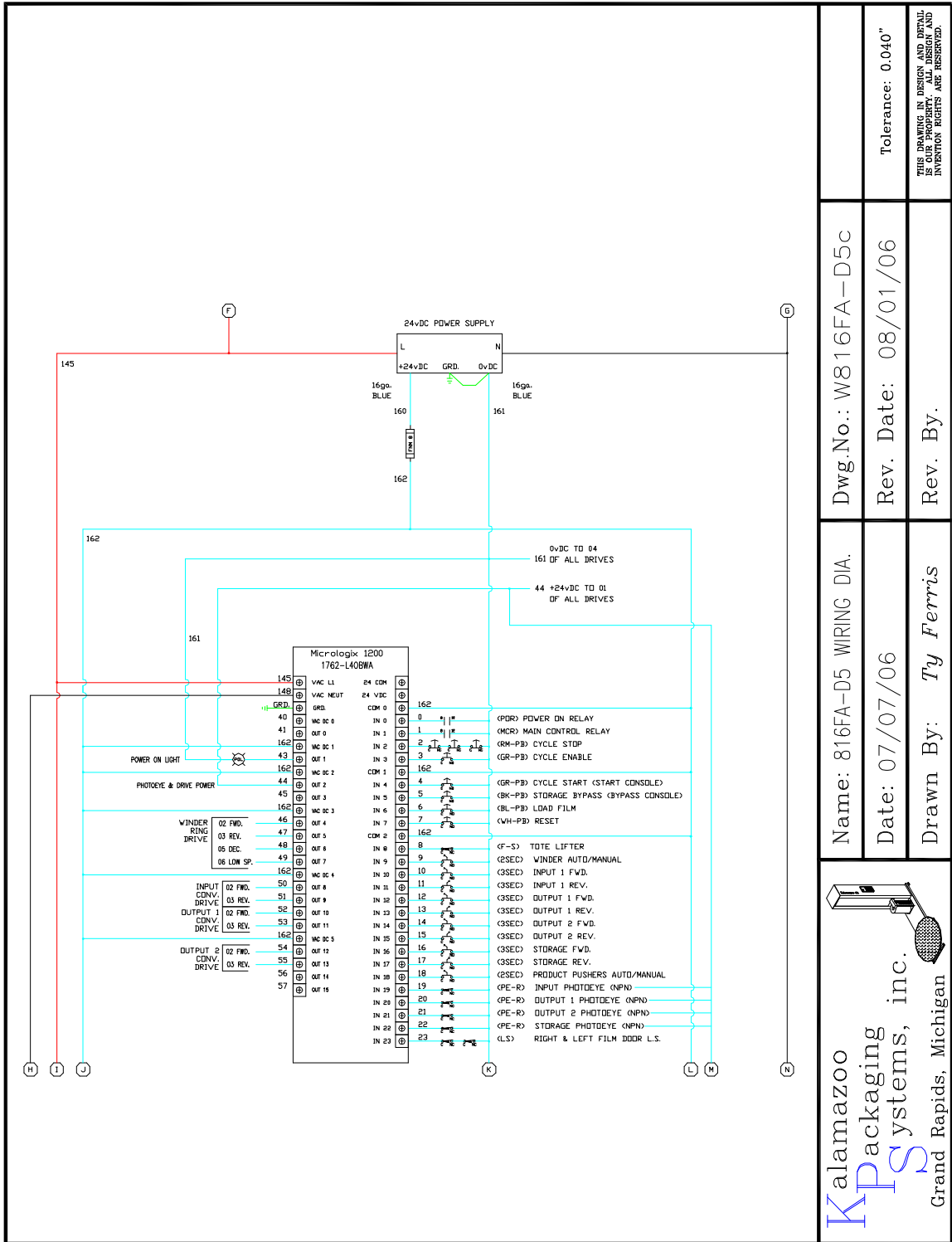
Rev. By:

Rev. By:

Tolerance: 0.040"

THIS DRAWING IN DESIGN AND DETAIL
IS THE PROPERTY OF KALAMAZOO PACKAGING
SYSTEMS, INC. ALL RIGHTS ARE RESERVED.



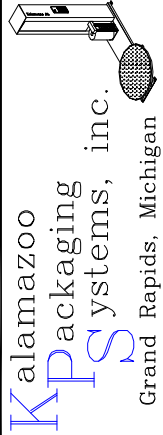
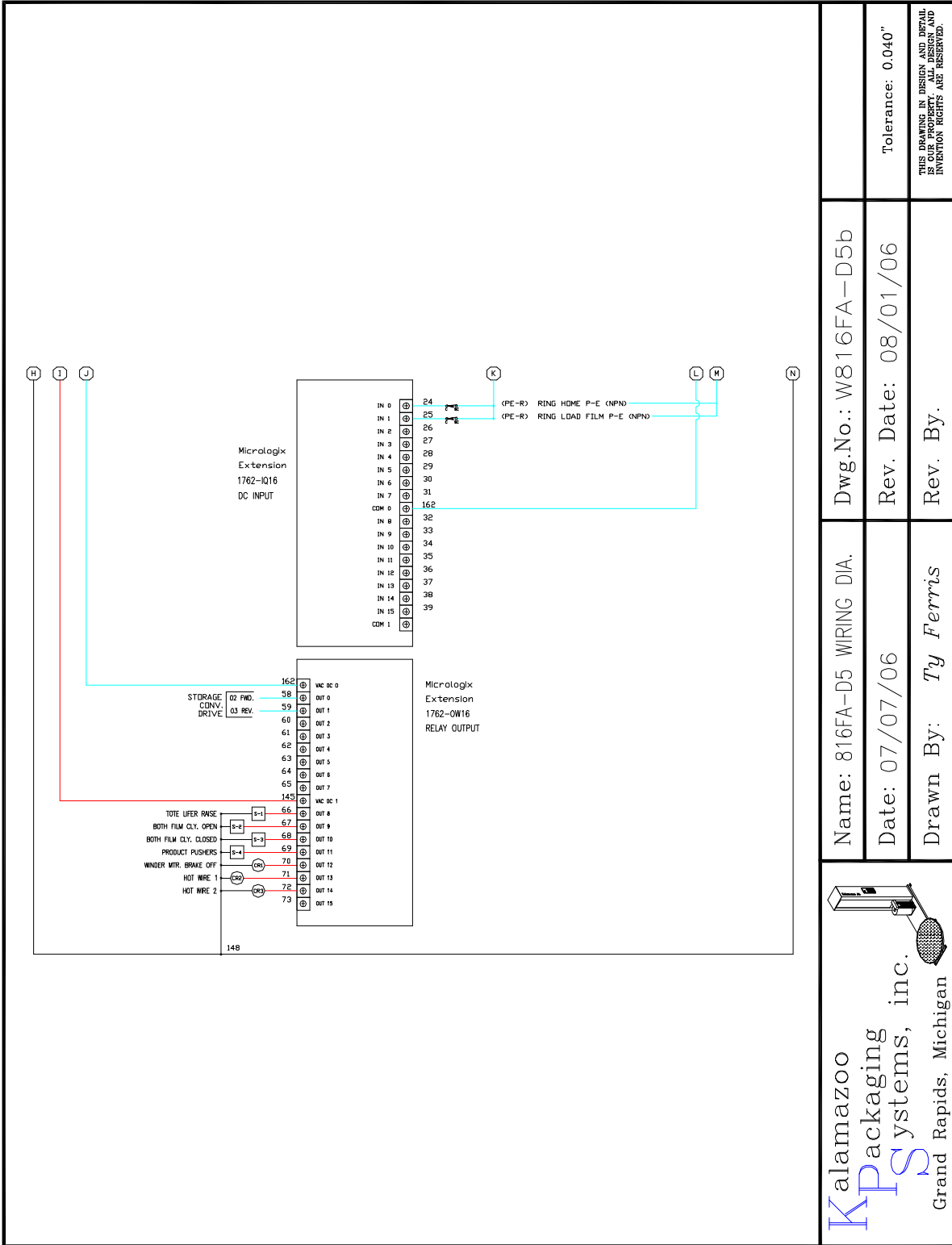


Name: 816FA-D5 WIRING DIA.
Date: 07/07/06
Drawn By: Ty Ferris

Dwg.No.: W816FA-D5c
Rev. Date: 08/01/06
Rev. By:

Tolerance: 0.040"

THIS DRAWING IS OUR PROPERTY AND ALL RIGHTS AND INVENTION RIGHTS ARE RESERVED.



Name: 816FA-D5 WIRING DIA.
Date: 07/07/06
Drawn By: Ty Ferris

Dwg.No.: W816FA-D5b
Rev. Date: 08/01/06
Rev. By:

Tolerance: 0.040"
THIS DRAWING IN DESIGN AND DETAIL IS OUR PROPERTY. ALL DESIGN AND INVENTION RIGHTS ARE RESERVED.